



# Enhancement Pack

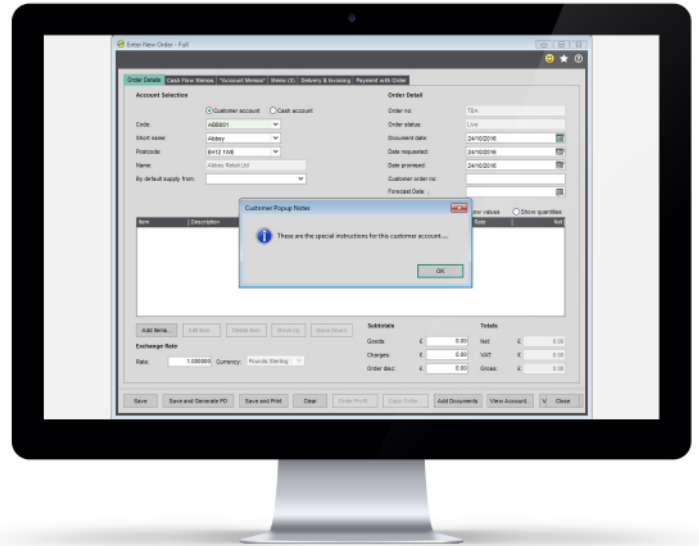
Sicon has created many enhancements for Sage 200 that are too small to become products on their own. In order to make these readily available, we have included over 90 enhancements and utilities to our Enhancement Pack modules.

- Installed and maintained within Sage 200.
- Runs within all Sage 200 companies at no additional cost.
- Available for all Sage 200 users based on permissions at no additional cost.

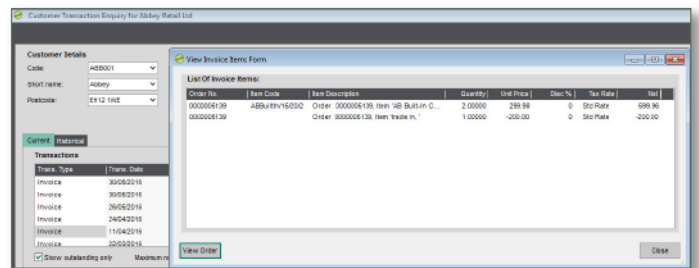
### Enhancement pack features include:

- Multi module features including pop-up notes for customers, suppliers and stock items.
- Memo tabs for SOP, POP and order processing exchange rates updated after ASM updates.
- New Account /Stock item prompt list, existing account numbers / stock codes listed.
- Nominal ledger journal import with tax.
- Price bands by delivery location and update prices and discount groups by percentage.
- Purchase ledger auto duplicate warning and reprint remittance from Transaction Enquiry.
- Purchase Order Accruals with detailed narrative and supplier price and quantity breaks.
- Hold all sales orders when customer account placed on hold, reason for SOP return.
- Copy a sales order to a return, display customer memo in SOP, force Proforma entry.
- Import SOP delivery addresses and SOP special prices by date range.
- Use stock item updater to make bulk changes to stock items.
- Hide stock item bins with no stock levels.
- Maintain customer stock codes on stock items and search in customer codes in SOP.

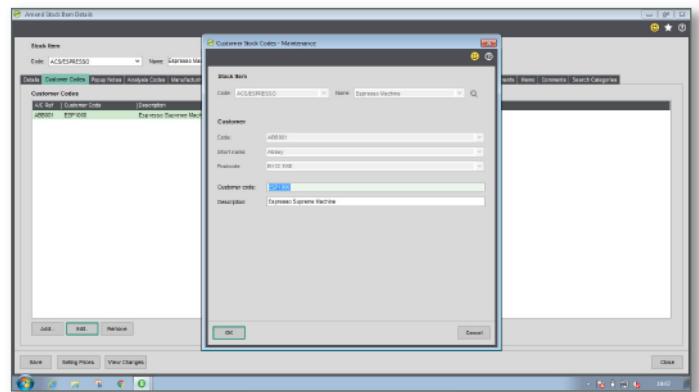
*NB: SOP functions are available when entering a full order on Sage 200.*



Customer Pop-Up Notes On Sales Order Processing



View Invoice Details



Customer Stock Code